

All roof types must be cleaned thoroughly for dirt, paint residues and other impurities. Removal of all types of growth (algae, fungus, moss and lichens) is also very important.

There are three ways to do it:

Iso A-Clean diluted with water 1:50

1. Clean mechanically and then apply the Iso A-Clean
2. If it is very dirty, Apply Iso-A Clean and let it work for 1 – 2 days. Then clean mechanically.
3. Clean mechanically and add Iso A-Clean simultaneously through the water

Iso A-Clean achieves maximum effect after 2 -3 days.

OBS:

Cleaning with too high pressure, small nozzles and hot water will in some cases force a lot of water into the roof material and, consequently, increase the moisture content to a high level. It is then very important to wait a few days before painting to avoid blistering

Instructions for different roof types:

Concrete tiles:



First coat with Isonit diluted with max. 20 % water.

Second coat undiluted Isonit. In very hot days it can be diluted with max. 10 % water

Recommended paint thickness:

Undiluted 200 µm – 275 µm wet paint corresponding to 64 – 90 µm dry paint film.

Diluted with 10% water 220 – 300 µm wet paint corresponding to 64 – 87 µm dry paint film.

Coverage undiluted: 3, 6 m² – 5 m²/l

Diluted 10 %: 3, 3 m² – 4, 5 m²/l

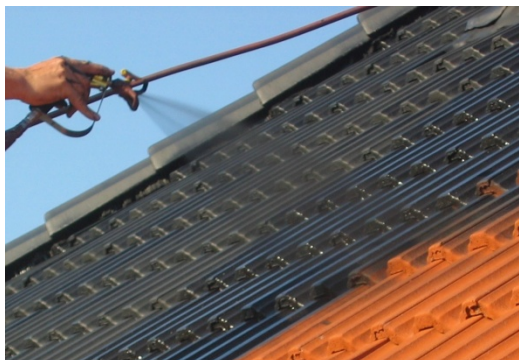
Drying time: 1 – 6 hours depending of temperature and humidity.

It is important that the first coat is dry before applying the second.

Always see detailed technical datasheet



Clay tiles:



Prime with Iso Tile Primer.

Recommended paint thickness:

One coat, 80 – 100 μm wet. Drying time $\frac{1}{2}$ - 1 hour, depending on temperature and humidity.

Coverage: 10 m^2 – 12 m^2/l

Then two coats of **Isonit or other Iso Paint Topcoats**

It is important that the first coat is dry before applying the second.

Recommended paint thickness:

Undiluted 200 μm – 275 μm wet paint corresponding to 64 – 90 μm dry paint film.

Diluted with 10% water 220 – 300 μm wet paint corresponding to 64 – 87 μm dry paint film.

Coverage undiluted: 3, 6 m^2 – 5 m^2/l

Diluted 10 %: 3, 3 m^2 – 4, 5 m^2/l

Drying time: 1 – 6 hours depending of temperature and humidity.

It is important that the first coat is dry before applying the second.

Always see detailed technical datasheet



Fibercement/Asbestos sheets:



Prime with **Isonit Construction Primer**.

Apply the primer with low pressure until the surface is saturated without achieving - very important - a shiny surface, but please be carefull not to prime to much, approx 1 ltr. For 10 m2

Then two coats of **Isonit or other Iso Paint Topcoats**

Coverage: 8 m²/l

Drying time is approximately 1 hour.

It is important that the first coat is dry before applying the second.

Recommended paint thickness:

Undiluted 200 µm – 275 µm wet paint corresponding to 64 – 90 µm dry paint film.

Diluted with 10% water 220 – 300 µm wet paint corresponding to 64 – 87 µm dry paint film.

Coverage undiluted: 3, 6 m² – 5 m²/l

Diluted 10 %: 3, 3 m² – 4, 5 m²/l

Drying time: 1 – 6 hours depending of temperature and humidity.

It is important that the first coat is dry before applying the second.

If the sheets are in poor condition it is recommended to paint with rubber – if they are very poor assess whether they should be painted

Always see detailed technical datasheet



Slates :

Prime with **Isonit Construction Primer**.

Apply the primer with low pressure until the surface is saturated without achieving - very important - a shiny surface, but please be careful not to prime too much, approx 1 ltr. For 10 m²

Then two coats of **Isonit or other Iso Paint Topcoats**

Coverage: 8 m²/l

Drying time is approximately 1 hour.

It is important that the first coat is dry before applying the second.

Recommended paint thickness:

Undiluted 200 µm – 275 µm wet paint corresponding to 64 – 90 µm dry paint film.

Diluted with 10% water 220 – 300 µm wet paint corresponding to 64 – 87 µm dry paint film.

Coverage undiluted: 3, 6 m² – 5 m²/l

Diluted 10 %: 3, 3 m² – 4, 5 m²/l

Drying time: 1 – 6 hours depending of temperature and humidity.

It is important that the first coat is dry before applying the second.

If the sheets are in poor condition it is recommended to paint with rubber – if they are very poor assess whether they should be painted

IMPORTANT !

Please note that you can not paint natural slates, because they contain too much oil !

Always see detailed technical datasheet

